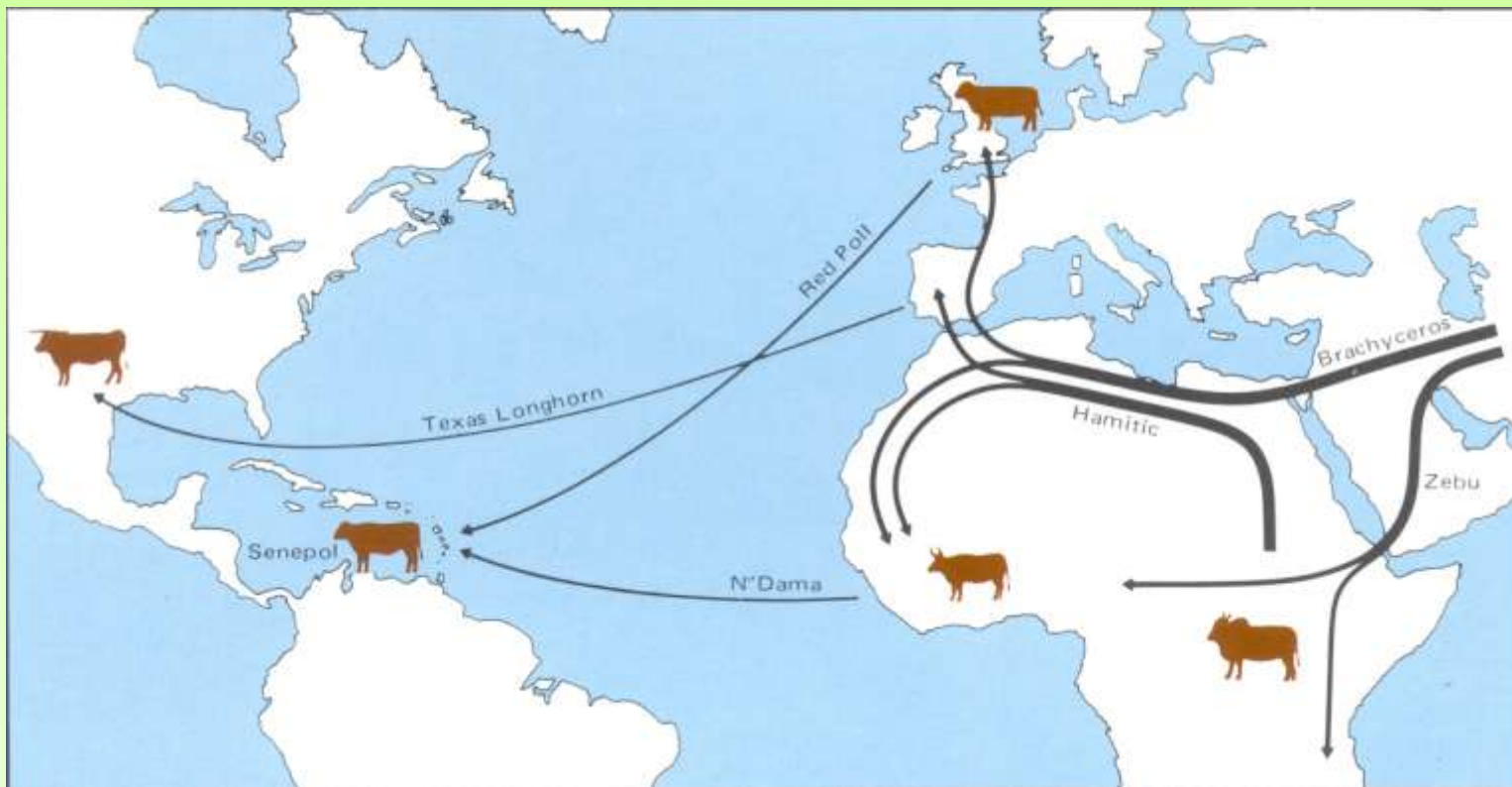


# SENEPOL CATTLE

AN HISTORICAL  
PERSPECTIVE IN PICTURES

# Migration Paths of the Senepol Ancestors





**N'DAMA Cattle came from West Africa in the slave ships to be used as work oxen on the plantations.**

**These hardy little cattle were very strong for their size and were extremely disease resistant.**



**They had large horns and varied in color from a light fawn to a darker red, with many having splashes of white.**



**The N'Dama were good little cattle, but they weren't perfect. They were small and had horns. The wiry little cattle just didn't fit the bill when it came to meat and milk production. Thoughts of the improvements that could be made began to surface.**

**What if we made them bigger, knocked the horns off, made them more uniform in color and conformation, but still kept all of the good features as well???**

**An idea took shape and.....**

**In 1918, Bromley Nelthropp began the process of breeding Red Poll bulls to the N'Dama cows, and through strict selection for the desired traits, the Senepol that we know today was developed.**



**Along the way, there were additions to the Senepol family, all of whom played a vital part in the overall picture.**





**It wasn't  
always easy  
work.**



**Conditions  
weren't  
extremely  
hospitable,**



**But the  
breed  
pushed  
forward,**





**And the  
end result  
was  
something  
special.**

**Now, we just had  
to convince the  
world...**



**The College of the Virgin Islands started in 1977 to work with the Senepol farmers on the island of St. Croix. The college was to assist in classifying the animals so that the cattle could be a recognized breed.**

**Through the efforts of Dr. Darshan S. Padda, the director of the Cooperative Extension Service and the Agriculture Experiment Station, Mr. Oscar E. Henry, the Commissioner of Agriculture, the Gasperi Family, the Lawaetz Family and the Nelthropp Family, the breed was recognized and demand for this Virgin Islands treasure began to grow.**

# **The Virgin Islands Senepol Association was chartered in February of 1977**

**The original founding members, many of which are still active, are:**

- Castle Nugent Farms(#1)
  - Mario Gasperi(#2)
  - Caroline Gasperi(#3)
  - Enrico Gasperi(#4)
- Annaly Farms(#5)
  - Frits E. Lawaetz(#7)
  - Hans Lawaetz(#6)
  - Frits T. Lawaetz(#8)
- Granard Estates(#12)
  - Henry Nelthropp(#9)
  - Barbara Nelthropp(#10)
- Oscar E. Henry(#11)
- (Nnumbers listed are membership numbers)

**Getting the cattle to the United States mainland posed the next big challenge to the breeders.**

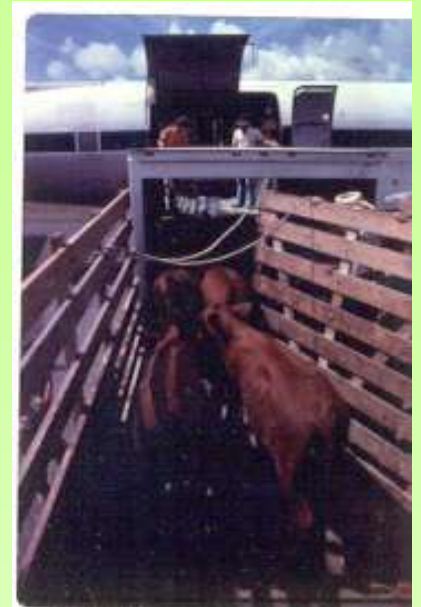
**First, they had to put the cattle in an approved quarantine facility.**



**Then came...THE PLANE!!! (and getting the cattle onto it)**



**From Marriott's Food Service lift trucks to ramps supported by a fork lift...**





**To engine  
trouble and  
loooooong  
waits...**



**The cattle finally got loaded, airborne, and off to the future of the breed.**





**The Senepol is a beautiful and special breed that continues in popularity today and has left an indelible mark on the cattle industry of the world.**





# A Photo Album Through the Years





**The end of another perfect day in paradise  
and we're Sailing off into a Sunset?????**

